



NEWBURGH ENLARGED CITY SCHOOL DISTRICT

South Middle School

33-63 Monument Street
Newburgh, New York 12550
www.newburghschools.org



Chanté Brooks, Principal
Vincent Brancato, Assistant Principal
Arlene Deida-Alm odovar, Assistant Principal
Gillian Matos, Assistant Principal
Kelly Am endola, Assistant Principal

Main Office: 845-563-7000
Fax: 845-563-7019

South Middle School

October Newsletter 2020

September

October 1st - 10th

Y^A@ []^Ac@a^ [~^æ} a^ [~!A-æ { a|^Aæ!^A [a} *A , ^||AAA
Y^Aæ!^A} [, Aa} AU&c [a^!Aæ} a^A^c^} A { [!^A^æ&ac^A^c [A
@æç^A [~!Aa} & [{ a} *A^c@A*!æa^A&|æ••A!^c~!} Ac [Ac@^A
a~a|aã} *ÉAA Y^A@aç^A^A} A]!^] æ!ã} *Ac@^Aa~a|aã} *ÉA
•^ccã} *A]! [c [& [| •Aæ} a^A]! [&^a~!^•ÉAæ} a^Aæ*^!|^A
æ , æãcã} *Ac@^A•c~a^} c•AAA Y^A { a••A^ [~!A\ã•A• [A
{ ~&AAV^A|~ } &@A! [[{ Aã•A~ã^cÉAc@^A@æ||•Aæ!^A
^ {]c^ÉAæ} a^A , ^A { a••A* [a} *Aã} c [Ac@^A&|æ••! [[{ •Ac [A
•^^Ac@^A•c~a^} c•A|^æ!} a} *A , æc@A [~!Aæ { æ:ã} *A•cæ~ÉAA
Y^A&æ} qcA , æãcAc [A•^^Aæ||Ac@^A•c~a^} c•Aã} Ac@^A
a~a|aã} *ÉAa~cã} cã|Ac@^} ÉAR~•cA|^cA^ [~!A&@a|a^} A
\} [, ÉAc@^A^A^| [] *A@^!^ÉA , ^A , æ} cAc@^ { A@^!^ÉAæ} a^A
, ^A| [ç^Ac@^ { A

U|^æ•^A!^çã^ , Ac@^A-æ { a|^A*~ã^Aæ} a^A { æ} ~æ|•A [] A
c@^Aã•c!ã&cA , ^a~æc^Aã} A!^*æ!ã•Ac [Aæ&æa^ { a&•ÉAc&@
æ••ã•cæ} &^Aæ} a^A~] aæc^a^A} ~! [{ æcã [] ÉA

Some important resources to use:

REMINDER:
School starts at 7 AM -
6th grade arrival starts at
6:50, dismissal for
walkers and pick-ups at
2:15

U}A Y^a}^•ãæ^ÉÉAcAã•AæA
çã!c~æ|Aãæ^ÉA { æ\^A•~!^A
c@^A•c~a^} c•A* [Aã} Ac [A
^ç^!^Aæ•ã* } ^ã&|æ••A
æ} a^A& [{]|^c^Ac@^A
* [[*|^A~! [{

[UTUA Y^A & \[\] ^A](#)
[U!^•^} cæcã \[\] Aæ} a^A Xã^ \[\]](#)

V^&@} [[[*^Aæ•ã•cæ} &^A
ã•Aæçæã|æà|^Ac@! [~*@Ac@^A
ãã•c!ã&cA^|] Aã^•\KAW•^A

What is SEL?

Ù [&æ|Áæ } áÁ^ { [cá [] æ|Á|æ! } á } * ÁÇÙÒŠDÁá•Ác@^Á! ; [&^••Ác@! [~ * @Á , @ã&@Á&@ã|ã!^ } Áæ } áÁæã~|c•Áæ&~ã!^Áæ } áÁ
^~^&cáç^|~Áæ] |^Ác@^Á\ [, |^á * ^ÉÁæccãc~á^•ÉÁæ } áÁ•\ã||•Á } ^&^••æi~Ác [Á~ } á!•cæ } áÁæ } áÁ { æ } æ * ^Á^ { [cá [] •ÉÁ
•^cÁæ } áÁæ&@ã^ç^Á } [•ãcáç^Á * [æ|•ÉÁ~^|Áæ } áÁ•@ [, Á^ {] æc@~Á~ [!Á [c@^! •ÉÁ^•cæã|ã•@Áæ } áÁ { æã } cæã } Á } [•ãcáç^Á
!^|æcá [] •@ã } •ÉÁæ } áÁ { æ\^Á!^• } [] •ã|Á^Áá&ã•ã } •É

CEÁ•^•c^ { á&ÉÁ&@ [[] , áá^Áæ] ; [æ&@Ác [ÁÙÒŠÁá } c^ } cá [] æ||^Á&~|cáçæc^•Áæ&æ!ã } * ÉÁ] æ!cã&á } æc [!^ÉÁæ } áÁ^~ãcæà|Á
|Áæ! } á } * Á^ } çã! [] { ^ } cÁæ } áÁ^çãá^ } &^Éàæ•^áÁ } !æ&cá&^•Ác@æcÁæ&cáç^|~Áá } ç [|ç^Áæ||Á•c~á^ } c•Áã } Ác@^ã!Á• [&æ|ÉÁ
^ { [cá [] æ|ÉÁæ } áÁæ&æã^ { á&Á * [, c@ÉÁV@ã•Áæ] ; [æ&@Á!^~ã!^•Áæ&Á [[!áá } æc^áÁ•c!æc^~Áæ&! [••Á&|æ•• [[{ •ÉÁ
•&@ [[!•ÉÁ@ [{ ^•ÉÁæ } áÁ& [{ { ~ } áçá^•É

V@^Á * [æ|Áá•Ác [Á] !^ } æ!^Á•c~á^ } c•Á~ [!Á [] * Éc^! { Á•&&^••Áã } Á|ã~^Áæ } áÁc [Á^& [{ ^Á!^• } [] •ã|Á^ÉÁ&æ!ã } * Á
&áçã : ^ } •Áã } Á [~!Á { ~|cá&~|c~!æ|Á• [&á^c~É

Questions we want students to think about based on each SEL competency:

Self Awareness

% Y @æcÁæ!^Á^ [~ Á * [[áÁæcÁá } Ác@ã•Á&|æ••Áæ } áÁ@ [, Áá [Á^ [~ Á\ } [, Á^ [~ Áæ!^Á * [[áÁæcÁáçÑ+
% Y @^ } Á^ [~ Áá } çc^ } á!•cæ } áÁ• [{ ^c@ã } * Áá } Ác@ã•Á&|æ••ÉÁ , @æcÁá [Á^ [~ Áá [Ñ+

Self Management

% P [, Áá [Á^ [~ Á { [ç^Ác [, æ!áá^ [~ Á * [æ|ÉÁ^• } ^&æ||^Á , @^ } Á^ [~ Á! [•Á~ [&~ •Á [!Áæ!^Á•c~&\Á [!Á•c!^••^áÑ+

Social Awareness

% Y @^ } Á^ [~ Áæ!^Á , [!\ã } * Áã } ÁæÁ * ! [~] Á@ [, Áá [Á^ [~ Á { æ\^Á•~!^ÁãÁã•Á~æã!Á~ [!Á^ç^!^ [] ^Ñ+

Relationship skills

% Y @æcÁá [Á^ [~ Áá [Á• [Ác@æcÁ^ [~ Á&|æ•• { æc^•Áæ } áÁc^æ&^!Á@æç^Á@^æ!áÁæ } áÁ~ } á!•cæ } áÁ^ [~ Á
áá^æ•@ , @æcÁ^ [~ Áæ!^Á•æ^ã } * Ñ+

Responsible decision making

“ Y @^ } Á^ [~ Áæ!^Á , [!\ã } * Á , áçÁ [c@^! •ÉÁ@ [, Áá [Á^ [~ Á { æ\^ÁæÁá^&ã•ã }] Ñ+

How will we help them at South Middle School?

V^æ&@^!•Á , á||Áã {]|^ { ^ } cÁÙÒŠÁ|•• [] •Áá~!ã } * Á&|æ••Áã } •c!~&cá []

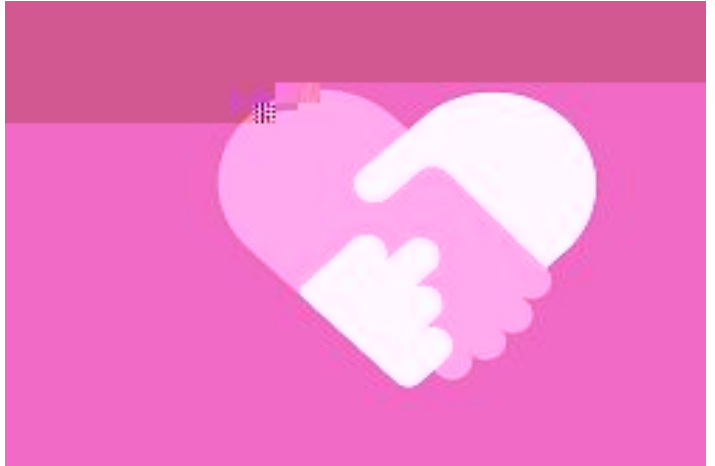
Resources that everyone can use:

[Ö! \[, c@ÉTã } á•^cÉÚ \[•c^!Éb \] *](#)

Rest, Reflect, ResetK

É R [~! } æ|ã } * Ác [Á^ç] !^••Á~^|ã } * •Áæ } áÁ
 , !áç^Á [[•ãcáç^Áæ~ã! { æcá [] •
É Ú@^•á&æ|Áæ&cáçãc^
É T^ááçæcá [] ÁÇÙ~á&\Á!É { á } ~c^Á [] cá [] •D

[@cc \] •KDD^ \[~c~Éà^Đá!€ZÇ•!çJ^•](#)
[@cc \] •KDD^ \[~c~Éà^ĐŠFÛU@É\]É^~•Á](#)



V@^Á•æ-^c^Áæ}åÁ, ^|~æ!^Á[~Á[~!Á•c~å^}c•Áæ}åÁ•cæ~Áæ!^Á[~!Á@ã* @^•cÁ]!ã[!ãc^ÁæcÁÙTÙÈÁ
ÿ[~!Á•c~å^}cÁ, ä||Á]æ!cã&ã]æc^Áä}Á•^ç^!æ|Á•æ-^c^Áä!ä||•ÈÁæ•Á]æ!cÁ[~Á[~!Á

South Middle School SEL Goals

Personalized to meet the needs of all students

Inspirational students to be tomorrow's leaders

Power Wellness resulting in a 25% increase in student wellness

and evidence-based practices

Don't Ask

